

Paw Prints Monthly

OUR MISSION STATEMENT:

Liberty Veterinary Hospital strives to create a state-of-the-art pet care facility that meets all of our clients' & pets' needs from nutritional supplies, boarding and grooming to the highest level of medical and surgical care. Because our team can only be as good as the sum of its parts, we nurture and educate our staff so that we may all provide uncompromising service, compassion, kindness and caring for each patient as a member of our own family.

JULY IS LYME DISEASE AWARENESS MONTH

Did You Know ...

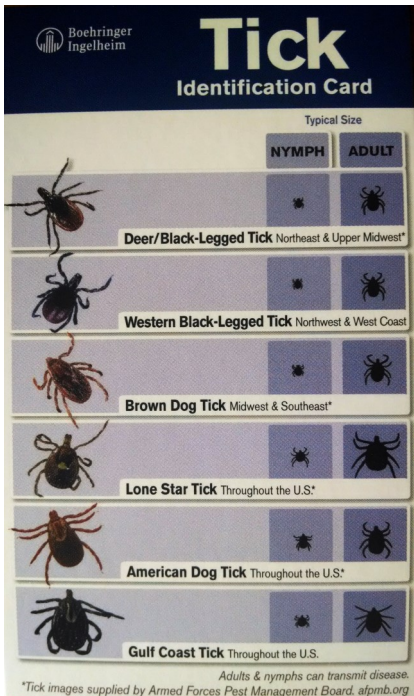
- We offer dog obedience class
- We offer boarding and laser surgery
- We offer massage and rehabilitation therapy recommendations
- We offer **free** educational seminars
- We really look forward to visiting with you and your pet!

OUR HOURS:

Mon, Tues, Thurs, Fri. 7:30am - 7pm
 Wed 7:30am - 6pm
 Sat 8:00am - 2pm
 Sun Closed

What is Lyme disease and how is it contracted?

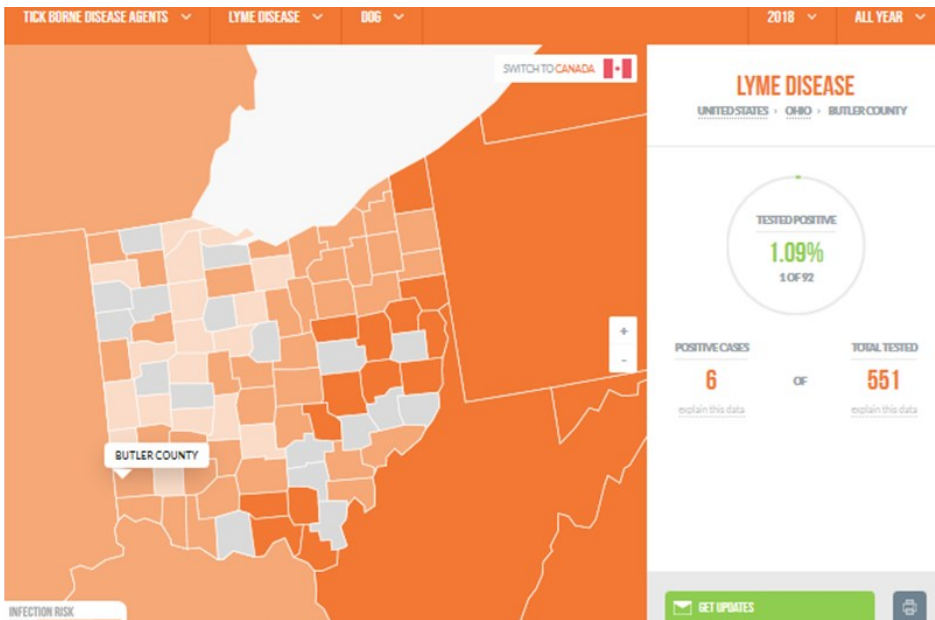
- Lyme disease occurs when an infected tick feeds on a pet and transmits the organism that causes the disease. Ticks need to be attached for at least 24 hours before they can transmit Lyme disease
- The 3 main animals that carry deer ticks are deer, geese and mice



Lyme Disease

Facts:

1. Lyme disease can infect humans too.
2. Dogs act as sentinels for Lyme disease—disease is often recognized in dogs before it's recognize in humans
3. Dogs are 50% more likely to get Lyme disease than people
4. Ehrlichiosis and anaplasmosis (aka "rocky mountain spotted fever"), also tick-borne diseases, are on the rise in dogs in the US
5. Dogs tend to roll in leaves and run unchecked into tick habitats
6. Kids and dogs often play together
7. Dogs can bring ticks into homes thus into close proximity to people
8. Cats can get Lyme disease, too



Where is Lyme Disease a Problem?

Lyme disease is expanding westward from the historic focus of the northeastern United States. Consistently stable activity levels are predicted for the Mid-Atlantic States and the upper Midwest.

<http://www.petsandparasites.org/>

Possible Symptoms

- Lameness of the limbs due to inflammation of the joints
- Kidney Problems
- Sensitive to touch
- Difficulty breathing
- Fever, lack of appetite, and depression may accompany inflammation of the joints
- Superficial lymph nodes close to the site of the infecting tick bite may be swollen
- Heart abnormalities are reported, but rare; they include complete heart block
- Nervous system complications (rare)



Prevention and tests

Vaccinate annually against Lyme disease

- Apply / use a tick control product on a regular basis
- Brush dogs frequently during tick season and conduct thorough tick checks.
- If you find a tick attached, remove it with out crushing:

How to remove a tick:

1. Grasp the tick close to the skin with a pair of fine tipped tweezers.
2. Pull the ticks body away from the skin. Avoid crushing the tick to prevent infection



LVH carries these tick prevention products:

Bravecto—oral flea and tick chew.
1 tab lasts 12 weeks

Vectra 3D (topical treatment for fleas, ticks and mosquitoes)

Other parasite control products are available though our online pharmacy.

TEST: The Snap 4DX test is a blood test that checks for Heartworm disease and three tick-borne diseases - Anaplasmosis, Lyme and Ehrlichia in dogs. Heartworm is a disease that is transmitted by mosquitos. **Lyme disease** is a bacterial infection transmitted by the deer tick. Anaplasmosis and Ehrlichia are also diseases that are transited by the tick.